



# STAMFORD BROOK

'making sustainable development happen'

A presentation by Francis Hesketh, TEP



STAMFORD BROOK 'making sustainable development happen'



# Site Location & Context



STAMFORD BROOK 'making sustainable development happen'



## The Team

- A Partnership between



- Consultant and Advisory Team



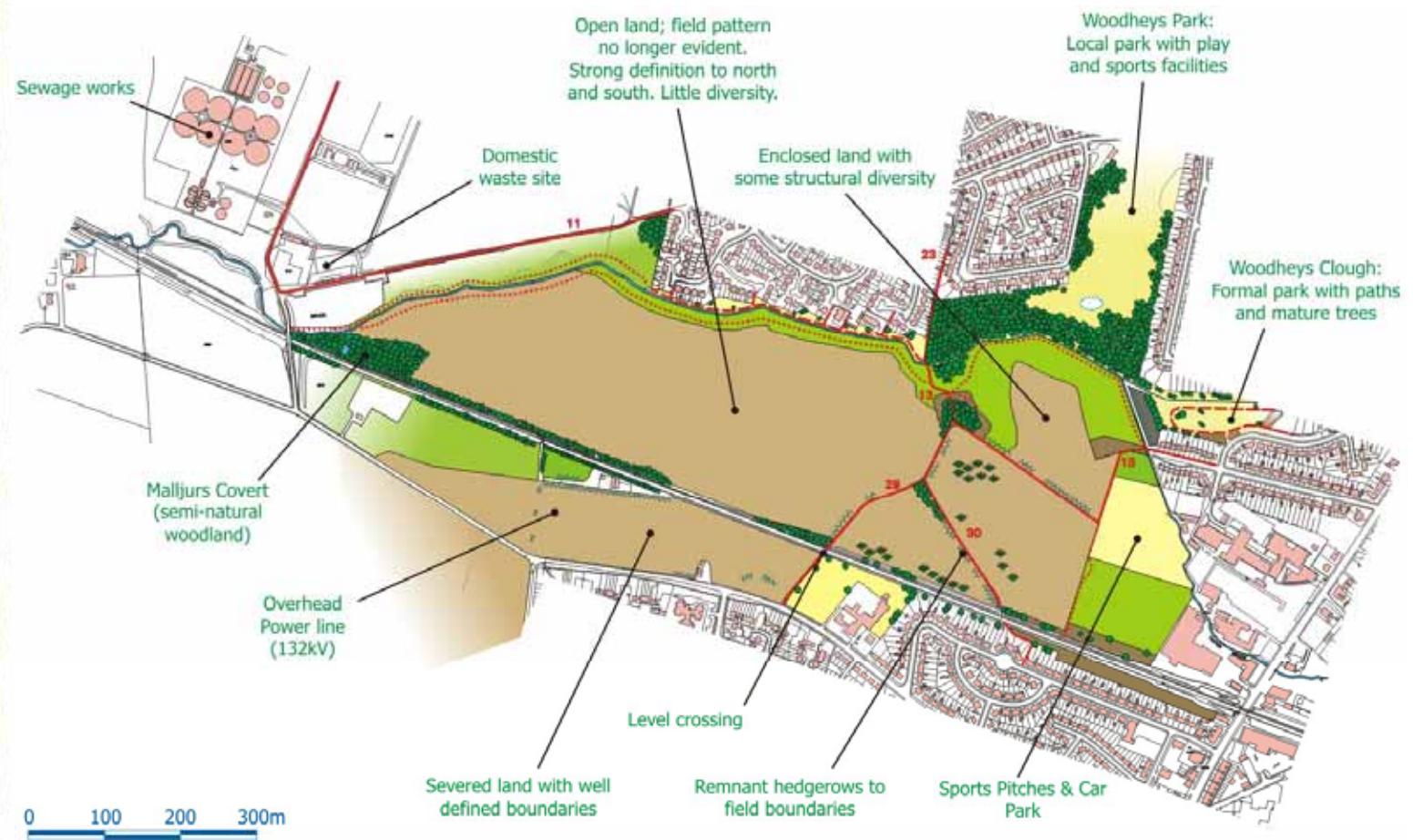


## Planning Background

- Trafford UDP - 'Sinderland Development Area'.
  - School extension
  - Local shopping
  - Open space and community facilities
  - Phased development of South Trafford College
  - Residential Development
  - New access road
  - Local open space to Sinderland Brook
- Outline planning application granted in 2000 for 645 dwellings

STAMFORD BROOK 'making sustainable development happen'

# Landscape Assessment





# Landscape Character



Edge of settlement greenfield, bland, degraded, few features



STAMFORD BROOK 'making sustainable development happen'



## The Vision

- “To create a sustainable and imaginative development of new homes in a new landscape, which integrates with the surrounding environment, and aims to be safe, healthy and an inspiring place in which to live, work and to have as a neighbour. A place and a community that will evolve, mature and rejuvenate, and serve as an exemplar of sustainable development over many decades”





## Guiding Principles

1. Minimise development impact on the environment
2. Enhance the local environment for the community
3. Enhance the visual impact and encourage local distinctiveness
4. Create a healthy environment and high quality life
5. Develop community spirit and links
6. Maintain and enhance historic and cultural features
7. Conserve and enhance natural resources





## Environmental Performance Standard

- Leeds Met. Uni. are assessing the extent that building sustainability measures adopted can be incorporated into UK Building Regulations – airtightness and thermal performance.
- The developers have adopted a tough 'Environmental Performance Standard'
  - Construction standard
  - Sustainable initiatives
  - Measures to minimise impact of buildings



## Built Form

- Neighbourhood planning
- Intermixed housing types
- Movement
- Landscape
- Key frontages
- Landmark buildings
- Spaces and places
- Sustainable construction
  - Durable, airtight, well-insulated
  - Solar orientation
  - Efficient use of space/materials
  - Wildlife in buildings



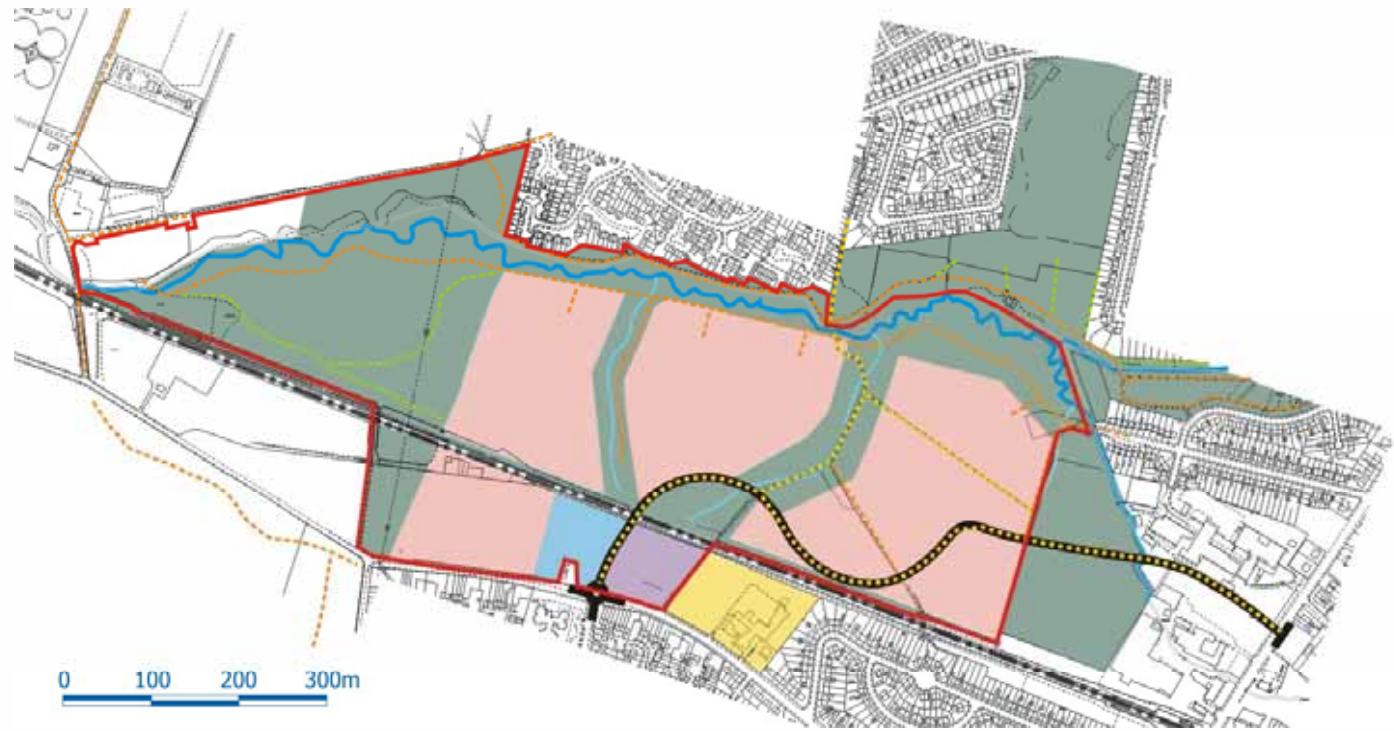
STAMFORD BROOK 'making sustainable development happen'



STAMFORD BROOK 'making sustainable development happen'



# Infrastructure – footpaths/cycleways





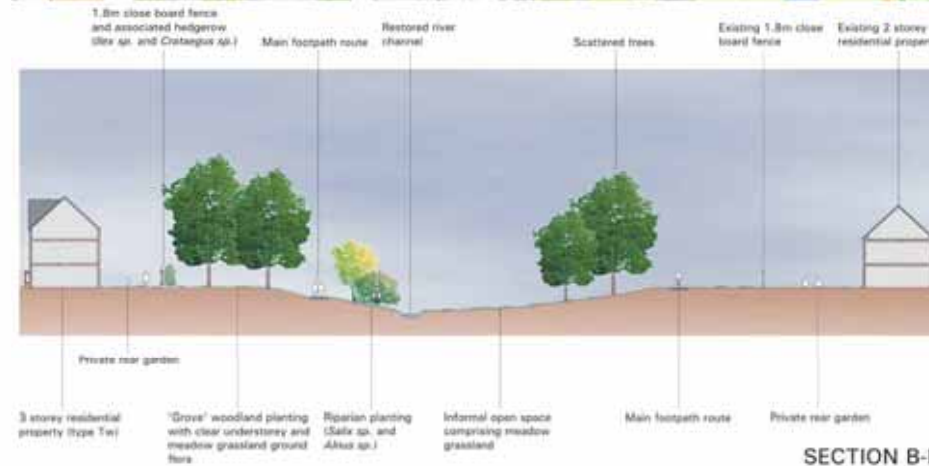






STAMFORD BROOK 'making sustainable development happen'

# River Restoration











STAMFORD BROOK 'making sustainable development happen'



## SuDS & Wildlife Corridors

- SuDS
  - Swales
  - Wetlands
  - Habitat creation
- Wildlife Corridors
  - Restored Sinderland Brook
  - Community woodland
  - Linear open space
  - Unused railway line
  - Minor wildlife corridors











STAMFORD BROOK 'making sustainable development happen'



# SUSTAINABLE DRAINAGE



Cambridge Design and Adoption Guide

STAMFORD BROOK 'making sustainable development happen'



## Community Woodland

- Red Rose Forest
- Attractive landscape
- Natural habitats for wildlife
- Recreational routes
- Screen views
- Productive woodland
- Healthy environment
- Enhance micro climate
- Community opportunities





# Public Open Space and Local Centre

- Public Open Space
  - Incorporate existing landscape and ecological features
  - Connect with existing PROW
  - Play provision
  - Urban spaces
- Local Centre
  - Retail
  - Community facilities



STAMFORD BROOK 'making sustainable development happen'



# Management

- Stamford Brook Management Board
- Management Plan
  - Woodland and hedgerows
  - River corridor
  - SUDS
  - Ornamental trees and shrubs
  - Grassland
  - Hard services

