

Welcome



Sir William Stanier Community School

Jon Taylor, Preconstruction Director - Willmott Dixon Construction

Guy Lacey, Operations Manager - Willmott Dixon Construction



Sir William Stanier Community School

The Facts

- New 7 Form Entry Secondary School
- £18.6 Million Build Cost
- Procured through the Cheshire Framework using NEC Option C
- Commenced in November 2007
- Full Open Book Procurement
- Delivered 2 weeks early
- £270k savings generated and reinvested in the scheme



Sir William Stanier Community School

The Brief

'to adopt a sustainable, low carbon approach to a community facility, to deliver 21st century education, which is adaptable and flexible with a provision for future expansion'



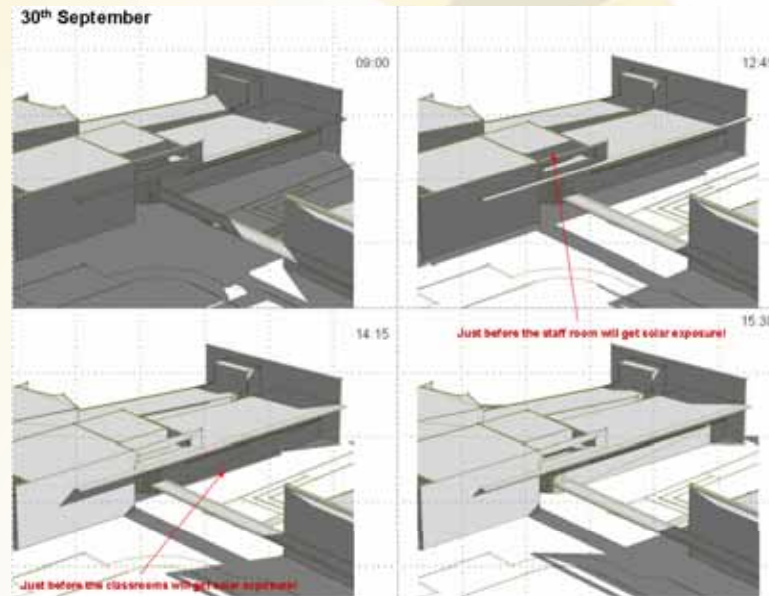
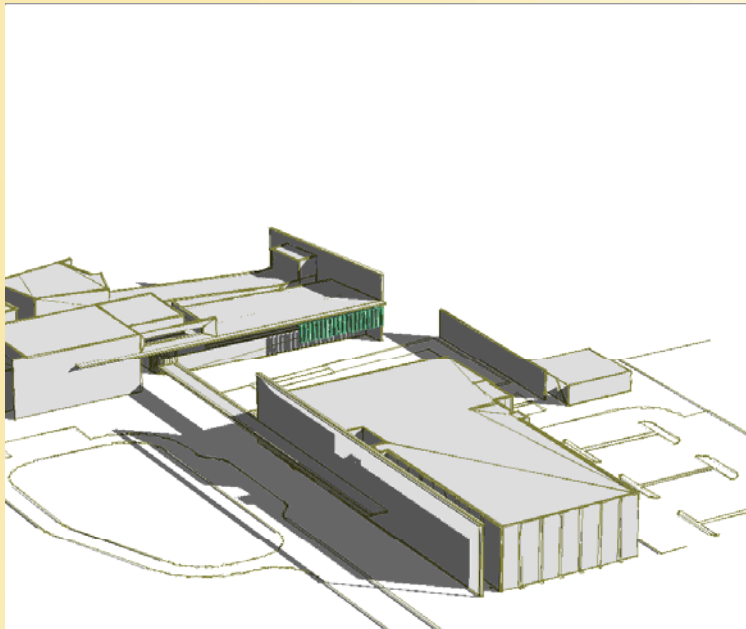
True Sustainable Approach

- Building Orientation
- Material Selection
- Reduction target for energy consumption
- Reduction target for water consumption
- True stakeholder and community consultation
- A True Community Facility



Sir William Stanier Community School

Building Orientation



Material Selection



Embodied energy	Manufacturer location	Green Guide rating	Recycled content	Recyclable	Additional info
<p>Timber (general) = 0.476 kgCO₂/ kg Dependent on species and location</p>	<p>Dependant on species</p>	<p>A [Western red cedar cladding on timber framework – insulation – dense blockwork – plasterboard/ plaster]</p>	<p>Natural material</p>	<p>Reclaimable</p>	<p>Only specify European grown species with full FSC certification. Preferably softwood such as: Western red cedar, European larch (moderately durable) Thermally treated wood can be a low-maintenance option</p>



Reduction Target for Energy Consumption

- Installation of CHP
- Mechanical Ventilation with Heat Recovery
- Low Energy Lighting



	Electricity	Fossil Fuels
Typical School Energy Profile	36 kWh/m ²	187 kWh/m ²
Project Target	36 kWh/m ²	142 kWh/m ²
Actual	34 kWh/m²	66 kWh/m²

Target for Water Consumption

- Target to achieve a 70% saving on water consumption based on 5.5m³ per person
- Actual consumption less than 1.5m³ per person
- Strategy included:
 - Rainwater Recovery
 - Syphonic Rainwater System
 - Efficient Intergrated Wash stations



Stakeholder & Community Consultation



A True Community Facility

- Recognised by OFSTED as 'an outstanding achievement'
- Recognition by DCSF as a case study for 'how to quickly improve the ethos of a school'
- Placed in the heart of the community the school now coordinates many projects including 'the Queens Park Project'
- Awarded 'Best Public/Community Project' at the Built in Quality Awards 2010



Sir William Stanier Community School

Ken White, Senior Planning and Development Officer, Cheshire East Borough Council

'I am delighted with the new school building. The expectations and aspirations of all the stakeholders have become a reality'

Mark Stanyer, Head Teacher, Sir William Stanier School

'This school enables us to deliver education exactly in line with our original vision. That could not have happened without the wonderful teamwork that existed throughout, teamwork led by Willmott Dixon'

