

Rising Bridge Business and Enterprise Village

**Steve Dean – Managing Director, Lancashire
County Developments Limited**

**Ben Sidebottom – Sustainability Consultant,
Scott Hughes Design**

Project Introduction



- Who are LCDL?
- The beginning of the journey
- Statement of Intent
- Important neighbours
- The journey...




www.lancashire.gov.uk



Project Background



Targets:

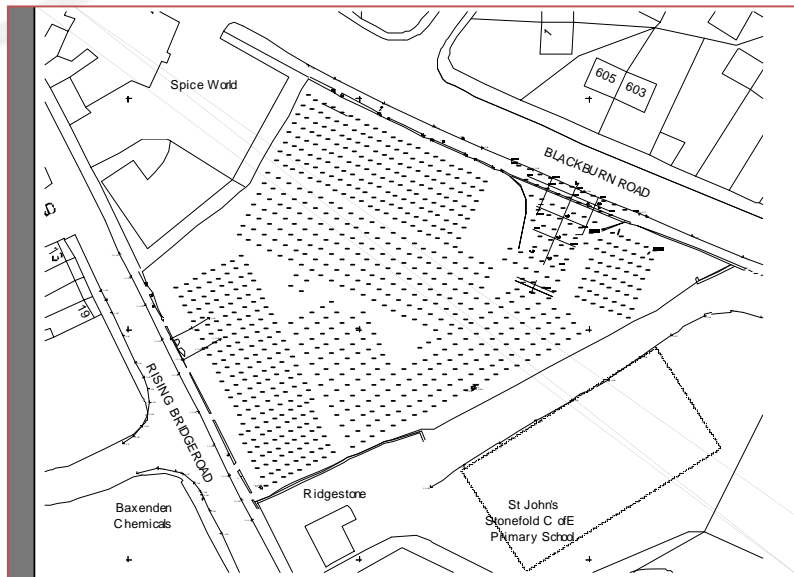
- **breeam**  'Very Good'
- Water
- Waste
- Carbon

Achievements:

- **breeam**  'Excellent'
- RTPI Commendation
- NWDA Exemplar
- Rok- Considerate Constructors
'Performance Beyond Compliance'

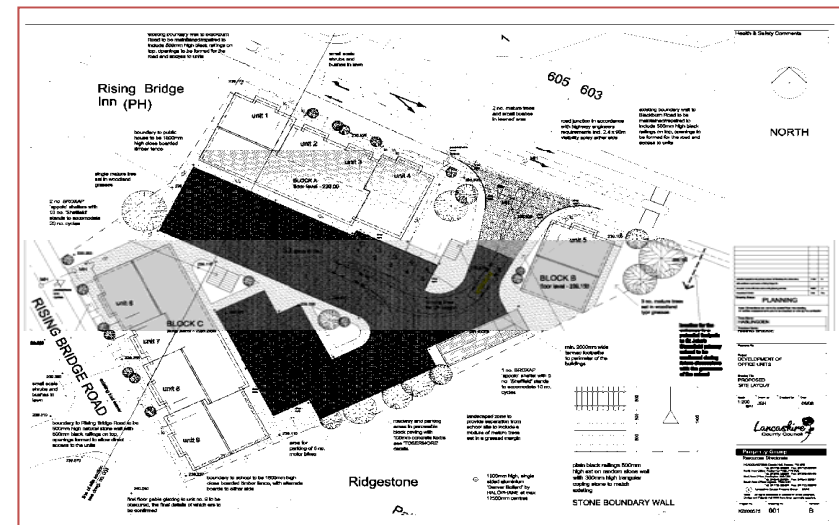
Sustainable Design

The Site



- Structural Solution
- SUDS
- Ecological Improvement

- Recycling Facilities
- Cyclist Facilities



Education Programme

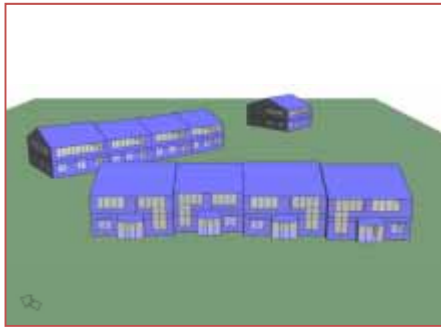


Sustainable Design Building Layout



- Local materials and trades
- Durable, low impact materials
- Natural day lighting
- Thermal mass
- Insulation
- Acoustics

Sustainable Design Building Services



- Low Carbon Technology
- Water Efficiency
- Dark Sky Friendly

- Best-Practice Design
- Thermal Modelling



www.lancashire.gov.uk



Sustainable Design Site Management

- Resource Monitoring
- Pollution Avoidance
- Responsibility
- Waste Management



Summary



- Future Financial Challenge
- Innovation
- Investment
- Identity



www.lancashire.gov.uk

